

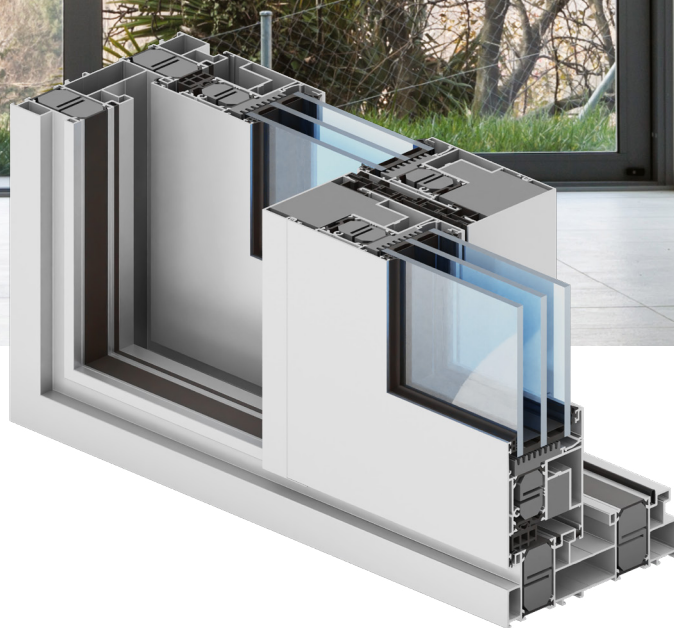
ULTRAGLIDE

THERMO

aliplast
aluminium systems



sliding system



Ultraglide Thermo

- system with increased thermal insulation performance used to design slide or lift-and-slide construction
- based on 1-, 2- and 3-track frames, possible to manufacture construction with 1 and 2 movable sashes
- UG Thermo system profiles are designed for installation of numerous manually and automation interlocked hardware available on the market
- possibility of using different types of filling (double and triple glass unit)
- there is possibility of use Insect System (fly screen are a practical and an extremely functional protection against insects)
- a wide range of colours – RAL palette (Qualicoat 1518), texture colours, Aliplast Wood Colour Effect (wood-like colours), Aliplast Loft View – colours imitating stone surfaces (Qualideco PL-0001), anodised colour (Qualanod 1808), bi-colour

ULTRAGLIDE

THERMO

aliplast
aluminium systems

sliding system

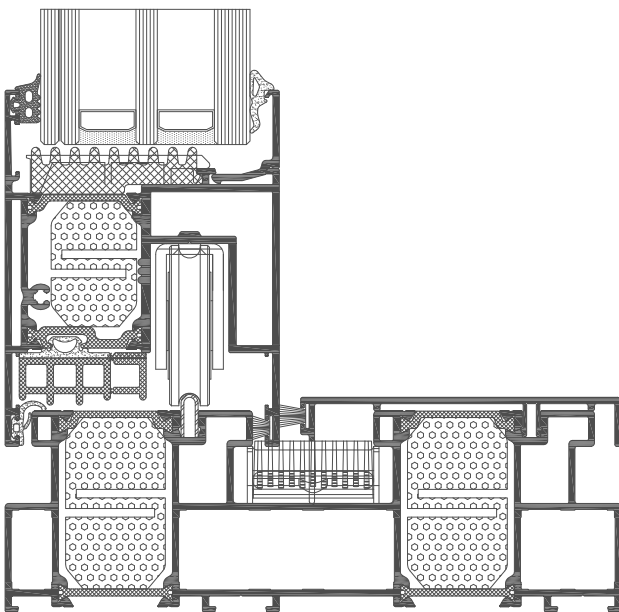
technical specification

system	material	depth of frame	depth of leaf	glazing range	weight of leaf
UG Thermo	aluminium/thermal insulation	173-269 mm	77 mm	18-59 mm	to 400 kg lift-sliding option/ to 440 kg sliding option

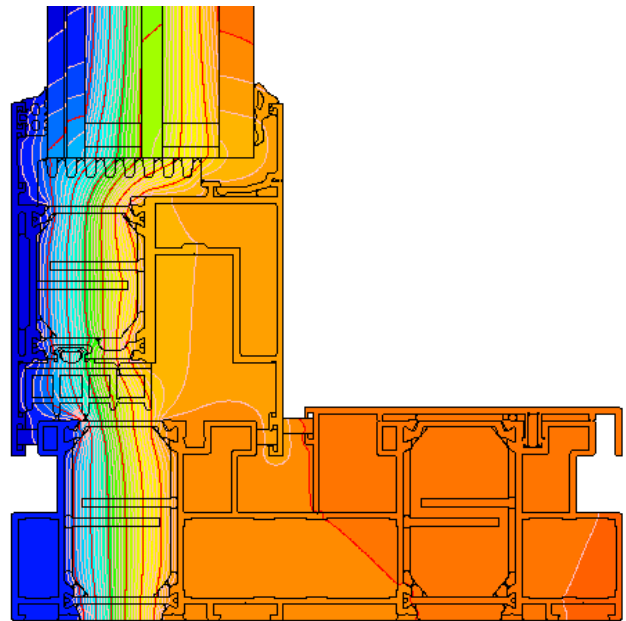
performance

system	thermal insulation Uf*	air permeability	windload resistance	watertightness
UG Thermo	Uf from 1,29 W/m ² K	Class 4; EN 12207	Class C3/B4 (1200 Pa/1600 Pa); EN 12210	Class E750 (750Pa); EN 12208

* Thermal insulation is dependent on a combination of profiles and thickness of the filling.



UG Thermo (UG9810 + UG9820N)



distribution of isotherms for frame with sash composition in the UG Thermo system (UG9613 + UG9820N)(UG9613 + UG9820N)